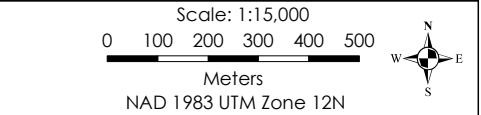
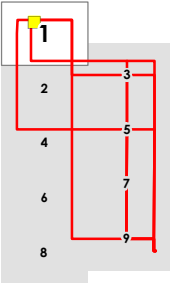


Renewable Energy Systems Canada Forty Mile Wind Power Connection Project Strip Mosaic SM1

- Electrical Grid**
 - Point Designation
 - Proposed Transmission Line Routes
 - Proposed Altalink Transmission Line
 - Existing Transmission Line
 - Approved Forty Mile 516S Substation
 - Proposed Altalink Murray Lake 326S Switching Station
- Transportation**
 - Highway - Primary
 - Highway - Secondary
 - Road - Local
 - Road - Other
- Oil and Gas**
 - Wellsite
 - Pipelines
- Hydrography**
 - Permanent
 - Intermittent
 - Waterbody
- Land**
 - Residence
 - Church and Cemetery
 - Crown Land

NOTES:

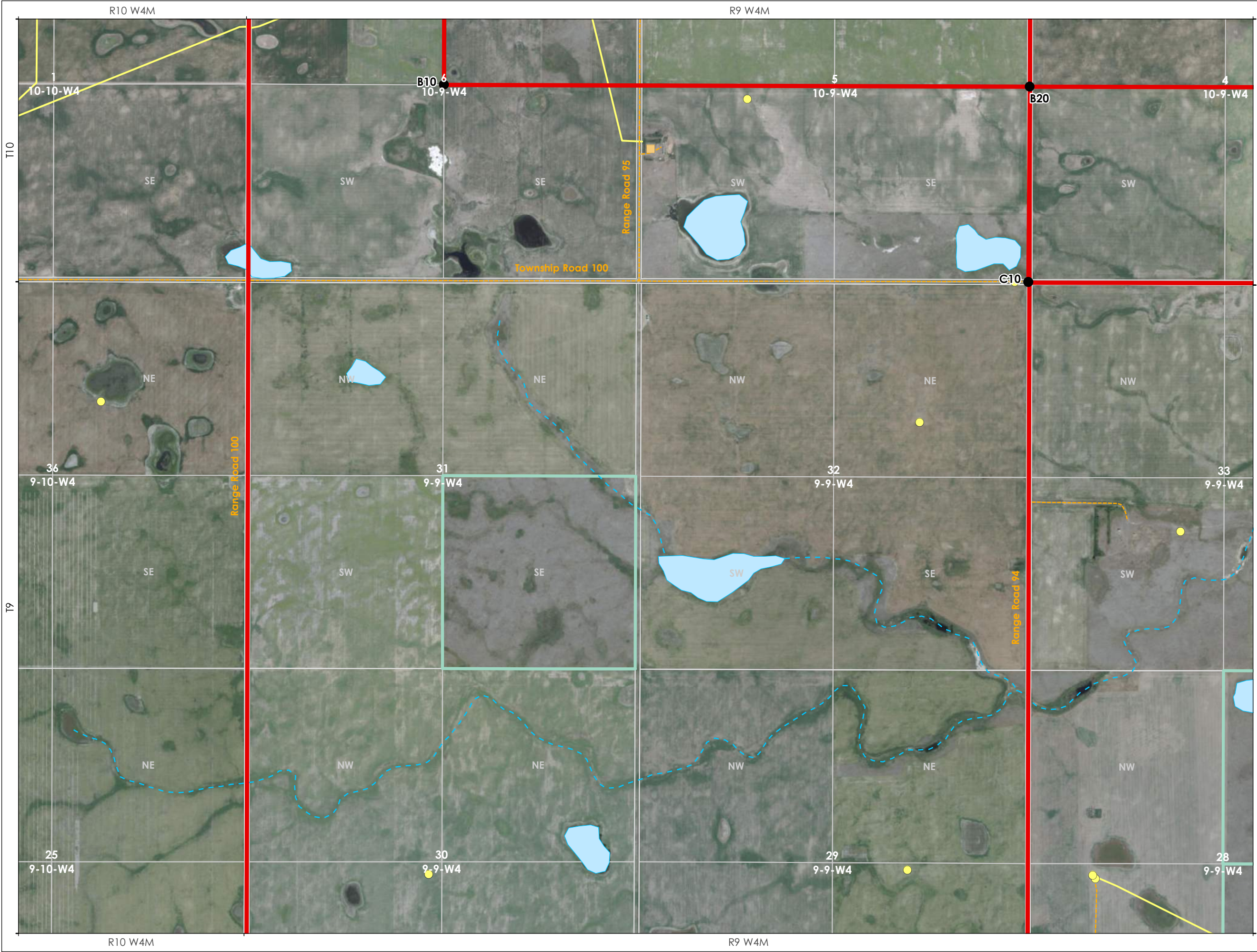
- Where the transmission line alignment appears to be on quarterline, the intent is to have the structure on quarterline. Where located on property, an approximate 25m right-of-way will be required, depending on the structure type used.
- Where the transmission line alignment appears to parallel road allowance or Highway, a structure could be located approximately 1m on road allowance or 1m on private property adjacent to the road allowance. Where located parallel to a road allowance, an approximate 12.5m right-of-way will be required on property, depending on the structure type used.
- All proposed transmission routes are shown as corridors, through consultation will determine which side of the road allowance the proposed route will be located. Many alignments are shown but only one route from the Approved Forty Mile Substation to AltaLink's Proposed Murray Lake Substation will be built.



| | | | |
|------------|----------|----------|------------|
| Author | JP | Project | HRD-010281 |
| Map Date | 16/12/21 | Revision | 0 |
| Field Date | N/A | Page | 1 of 9 |

This product has been created with the highest degree of accuracy possible. However, information shown on this map is compiled from numerous sources and may not be complete or accurate. Cardon Group of Companies (CGC) on behalf of Canada West Land (CWL) cannot be held responsible for the misuse or misinterpretation of any information and offers no warranty, guarantees, or representations of any kind in connection to its accuracy or completeness. CGC on behalf of CWL accepts no liability for any loss, damage, or inconvenience caused by the use or reliance on any information or data related to this product.

Source: Esri, Maxar, GeoEye, Earthstar Geographics, CNES/Airbus DS, USDA, USGS, AeroGRID, IGN, and the GIS User Community.



Renewable Energy Systems Canada Forty Mile Wind Power Connection Project Strip Mosaic SM2

Electrical Grid

- Point Designation
- Proposed Transmission Line Routes
- Proposed Altalink Transmission Line
- Existing Transmission Line
- Approved Forty Mile 516S Substation
- Proposed Altalink Murray Lake 326S Switching Station

Transportation

- Highway - Primary
- Highway - Secondary
- Road - Local
- Road - Other

Oil and Gas

- Wellsite
- Pipelines

Hydrography

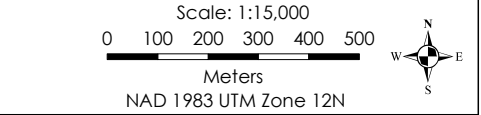
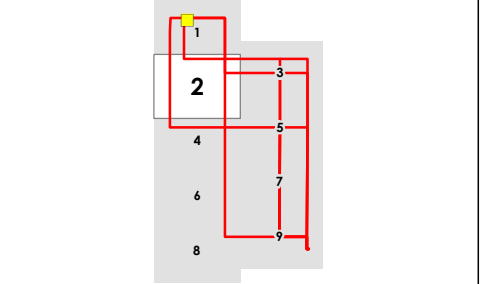
- Permanent
- Intermittent
- Waterbody

Land

- Residence
- Church and Cemetery
- Crown Land

NOTES:

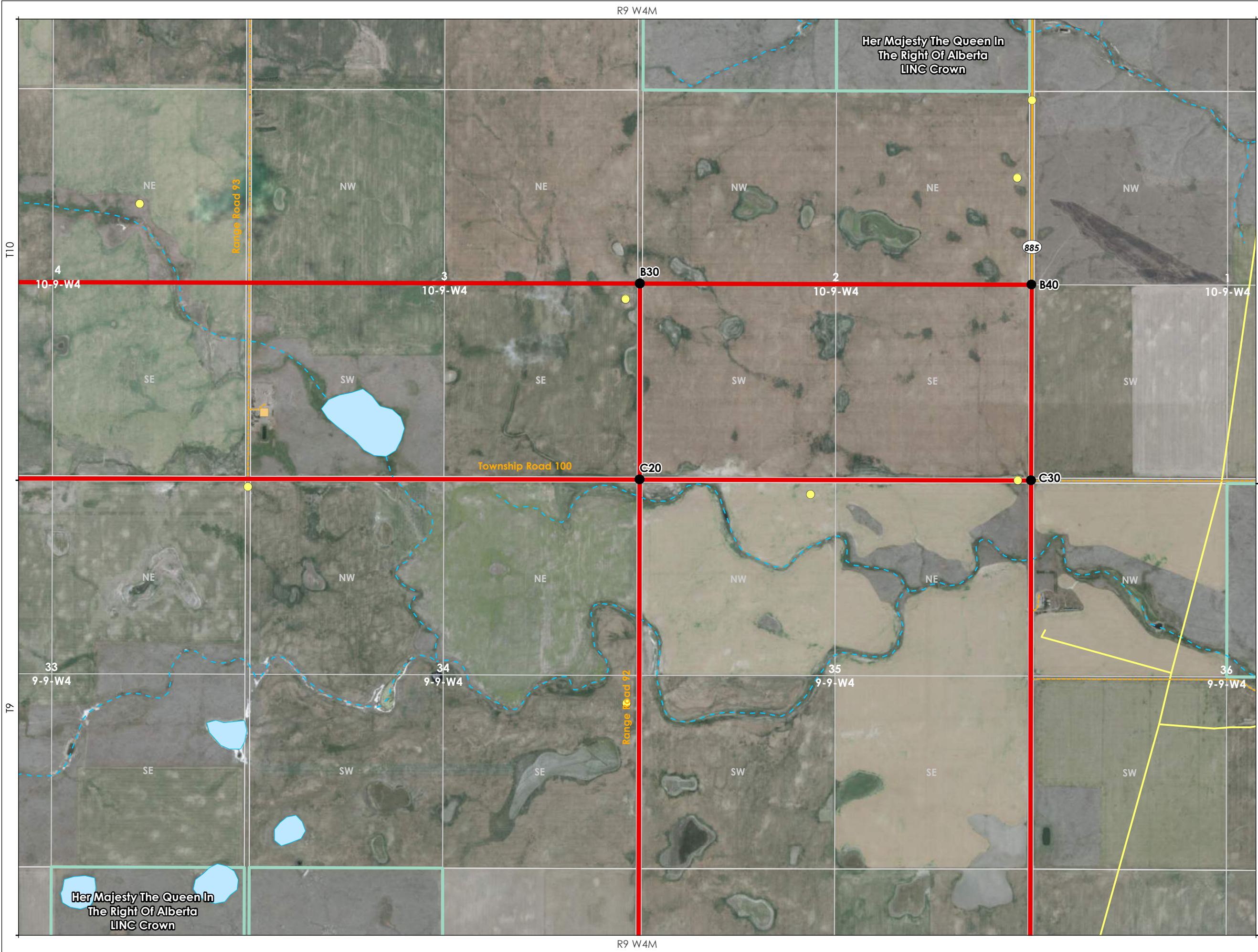
- Where the transmission line alignment appears to be on quarterline, the intent is to have the structure on quarterline. Where located on property, an approximate 25m right-of-way will be required, depending on the structure type used.
- Where the transmission line alignment appears to parallel road allowance or Highway, a structure could be located approximately 1m on road allowance or 1m on private property adjacent to the road allowance. Where located parallel to a road allowance, an approximate 12.5m right-of-way will be required on property, depending on the structure type used.
- All proposed transmission routes are shown as corridors, through consultation will determine which side of the road allowance the proposed route will be located. Many alignments are shown but only one route from the Approved Forty Mile Substation to AltaLink's Proposed Murray Lake Substation will be built.



| | | | |
|-----------------------------|----------|----------|------------|
| CANADA WEST LAND | | | |
| Author | JP | Project | HRD-010281 |
| Map Date | 16/12/21 | Revision | 0 |
| Field Date | N/A | Page | 2 of 9 |

This product has been created with the highest degree of accuracy possible. However, information shown on this map is compiled from numerous sources and may not be complete or accurate. Cardon Group of Companies (CGC) on behalf of Canada West Land (CWL) cannot be held responsible for the misuse or misinterpretation of any information and offers no warranty, guarantees, or representations of any kind in connection to its accuracy or completeness. CGC on behalf of CWL accepts no liability for any loss, damage, or inconvenience caused by the use or reliance on any information or data related to this product.

Source: Esri, Maxar, GeoEye, Earthstar Geographics, CNES/Airbus DS, USDA, USGS, AeroGRID, IGN, and the GIS User Community.



Renewable Energy Systems Canada Forty Mile Wind Power Connection Project Strip Mosaic SM3

Electrical Grid

- Point Designation
- Proposed Transmission Line Routes
- Proposed Altalink Transmission Line
- Existing Transmission Line
- Approved Forty Mile 516S Substation
- Proposed Altalink Murray Lake 326S Switching Station

Transportation

- Highway - Primary
- Highway - Secondary
- Road - Local
- Road - Other

Oil and Gas

- Wellsite
- Pipelines

Hydrography

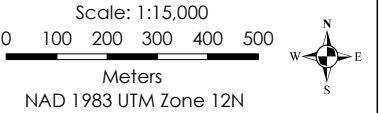
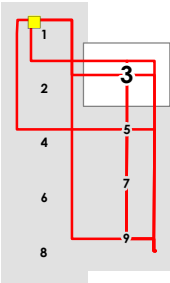
- Permanent
- Intermittent
- Waterbody


Land

- Residence
- Church and Cemetery
- Crown Land

NOTES:

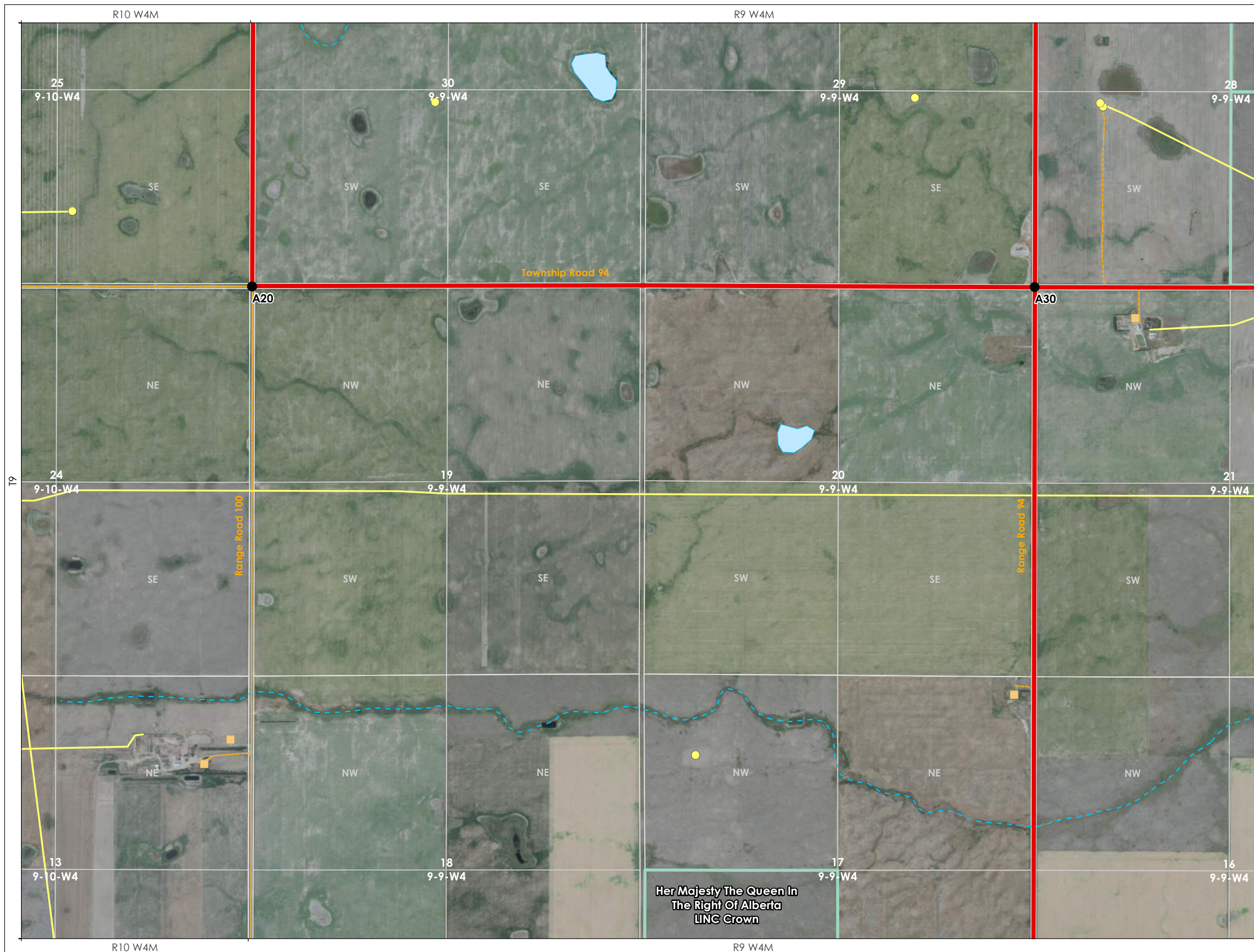
- Where the transmission line alignment appears to be on quarterline, the intent is to have the structure on quarterline. Where located on property, an approximate 25m right-of-way will be required, depending on the structure type used.
- Where the transmission line alignment appears to parallel road allowance or Highway, a structure could be located approximately 1m on road allowance or 1m on private property adjacent to the road allowance. Where located parallel to a road allowance, an approximate 12.5m right-of-way will be required on property, depending on the structure type used.
- All proposed transmission routes are shown as corridors, through consultation will determine which side of the road allowance the proposed route will be located. Many alignments are shown but only one route from the Approved Forty Mile Substation to AltaLink's Proposed Murray Lake Substation will be built.



| | | | |
|-------------------------|----------|---|------------|
| CANADA WEST LAND | |  | |
| Author | JP | Project | HRD-010281 |
| Map Date | 16/12/21 | Revision | 0 |
| Field Date | N/A | Page | 3 of 9 |










This product has been created with the highest degree of accuracy possible. However, information shown on this map is compiled from numerous sources and may not be complete or accurate. Cardon Group of Companies (CGC) on behalf of Canada West Land (CWL) cannot be held responsible for the misuse or misinterpretation of any information and offers no warranty, guarantees, or representations of any kind in connection to its accuracy or completeness. CGC on behalf of CWL accepts no liability for any loss, damage, or inconvenience caused by the use or reliance on any information or data related to this product.

Source: Esri, Maxar, GeoEye, Earthstar Geographics, CNES/Airbus DS, USDA, USGS, AeroGRID, IGN, and the GIS User Community.












**Renewable Energy Systems
Canada Forty Mile Wind
Power Connection Project
Strip Mosaic**
SM4

Electrical Grid

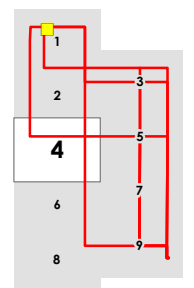
-  Point Designation
 -  Proposed Transmission Line Routes
 -  Proposed Altalink Transmission Line
 -  Existing Transmission Line
 -  Approved Forty Mile 516S Substation
 -  Proposed Altalink Murray Lake 326S Switching Station
- Land**
-  Residence
 -  Church and Cemetery
 -  Crown Land

Transportation

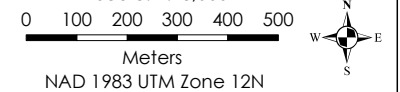
-  Highway - Primary
 -  Highway - Secondary
 -  Road - Local
 -  Road - Other
- Oil and Gas**
-  Wellsite
 -  Pipelines
- Hydrography**
-  Permanent
 -  Intermittent
 -  Waterbody

NOTES:

- Where the transmission line alignment appears to be on quarterline, the intent is to have the structure on quarterline. Where located on property, an approximate 25m right-of-way will be required, depending on the structure type used.
- Where the transmission line alignment appears to parallel road allowance or Highway, a structure could be located approximately 1m on road allowance or 1m on private property adjacent to the road allowance. Where located parallel to a road allowance, an approximate 12.5m right-of-way will be required on property, depending on the structure type used.
- All proposed transmission routes are shown as corridors, through consultation will determine which side of the road allowance the proposed route will be located. Many alignments are shown but only one route from the Approved Forty Mile Substation to AltaLink's Proposed Murray Lake Substation will be built.



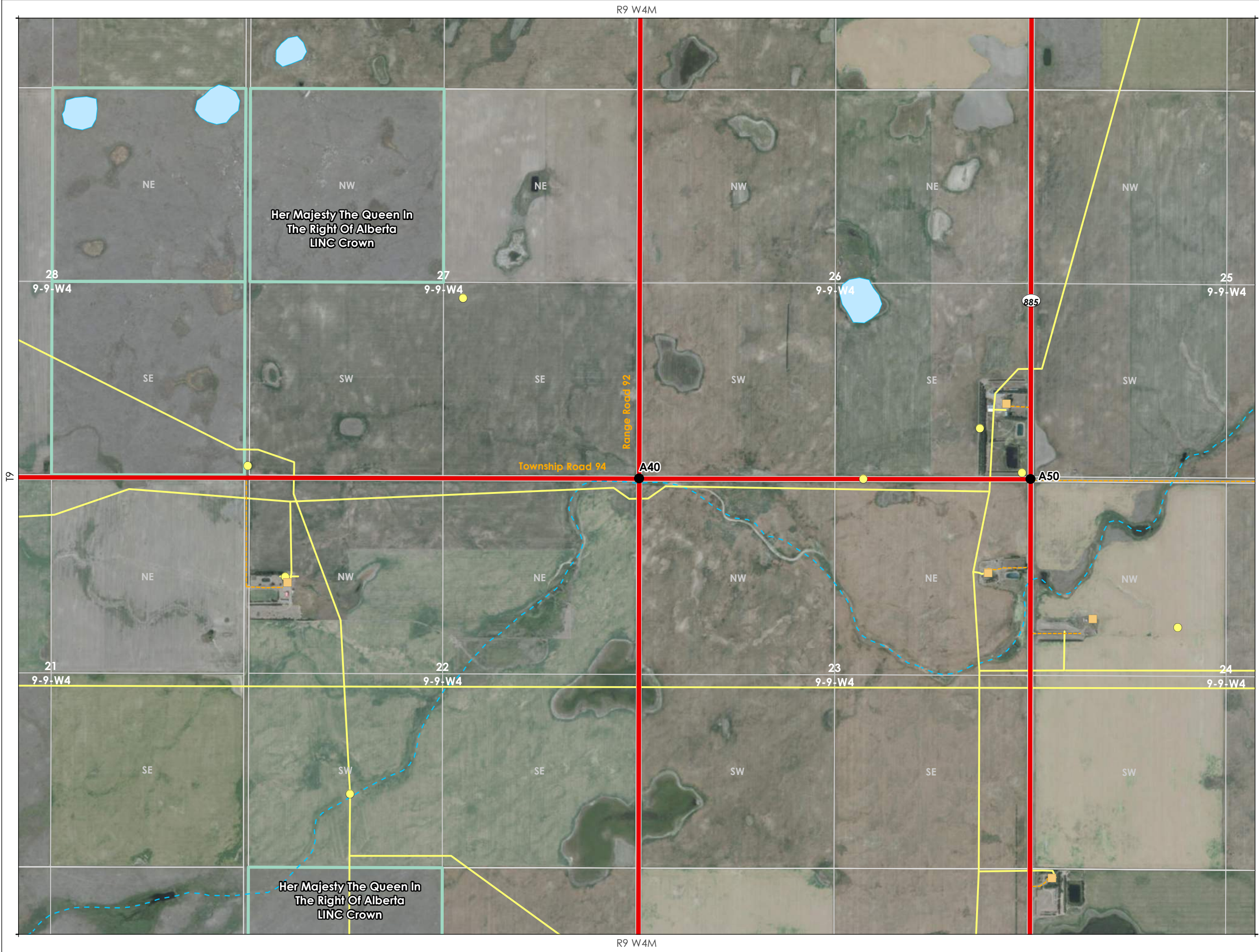
Scale: 1:15,000



| | | | |
|------------|----------|----------|------------|
| Author | JP | Project | HRD-010281 |
| Map Date | 16/12/21 | Revision | 0 |
| Field Date | N/A | Page | 4 of 9 |

This product has been created with the highest degree of accuracy possible. However, information shown on this map is compiled from numerous sources and may not be complete or accurate. Cardon Group of Companies (CGC) on behalf of Canada West Land (CWL) cannot be held responsible for the misuse or misinterpretation of any information and offers no warranty, guarantees, or representations of any kind in connection to its accuracy or completeness. CGC on behalf of CWL accepts no liability for any loss, damage, or inconvenience caused by the use or reliance on any information or data related to this product.

Source: Esri, Maxar, GeoEye, Earthstar Geographics, CNES/Airbus DS, USDA, USGS, AeroGRID, IGN, and the GIS User Community.



Renewable Energy Systems Canada Forty Mile Wind Power Connection Project Strip Mosaic SM5

Electrical Grid

- Point Designation
- Proposed Transmission Line Routes
- Proposed Altalink Transmission Line
- Existing Transmission Line
- Approved Forty Mile 516S Substation
- Proposed Altalink Murray Lake 326S Switching Station

Transportation

- Highway - Primary
- Highway - Secondary
- Road - Local
- Road - Other

Oil and Gas

- Wellsite
- Pipelines

Hydrography

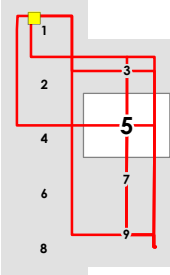
- Permanent
- Intermittent
- Waterbody

Land

- Residence
- Church and Cemetery
- Crown Land

NOTES:

- Where the transmission line alignment appears to be on quarterline, the intent is to have the structure on quarterline. Where located on property, an approximate 25m right-of-way will be required, depending on the structure type used.
- Where the transmission line alignment appears to parallel road allowance or Highway, a structure could be located approximately 1m on road allowance or 1m on private property adjacent to the road allowance. Where located parallel to a road allowance, an approximate 12.5m right-of-way will be required on property, depending on the structure type used.
- All proposed transmission routes are shown as corridors, through consultation will determine which side of the road allowance the proposed route will be located. Many alignments are shown but only one route from the Approved Forty Mile Substation to AltaLink's Proposed Murray Lake Substation will be built.



Scale: 1:15,000

0 100 200 300 400 500

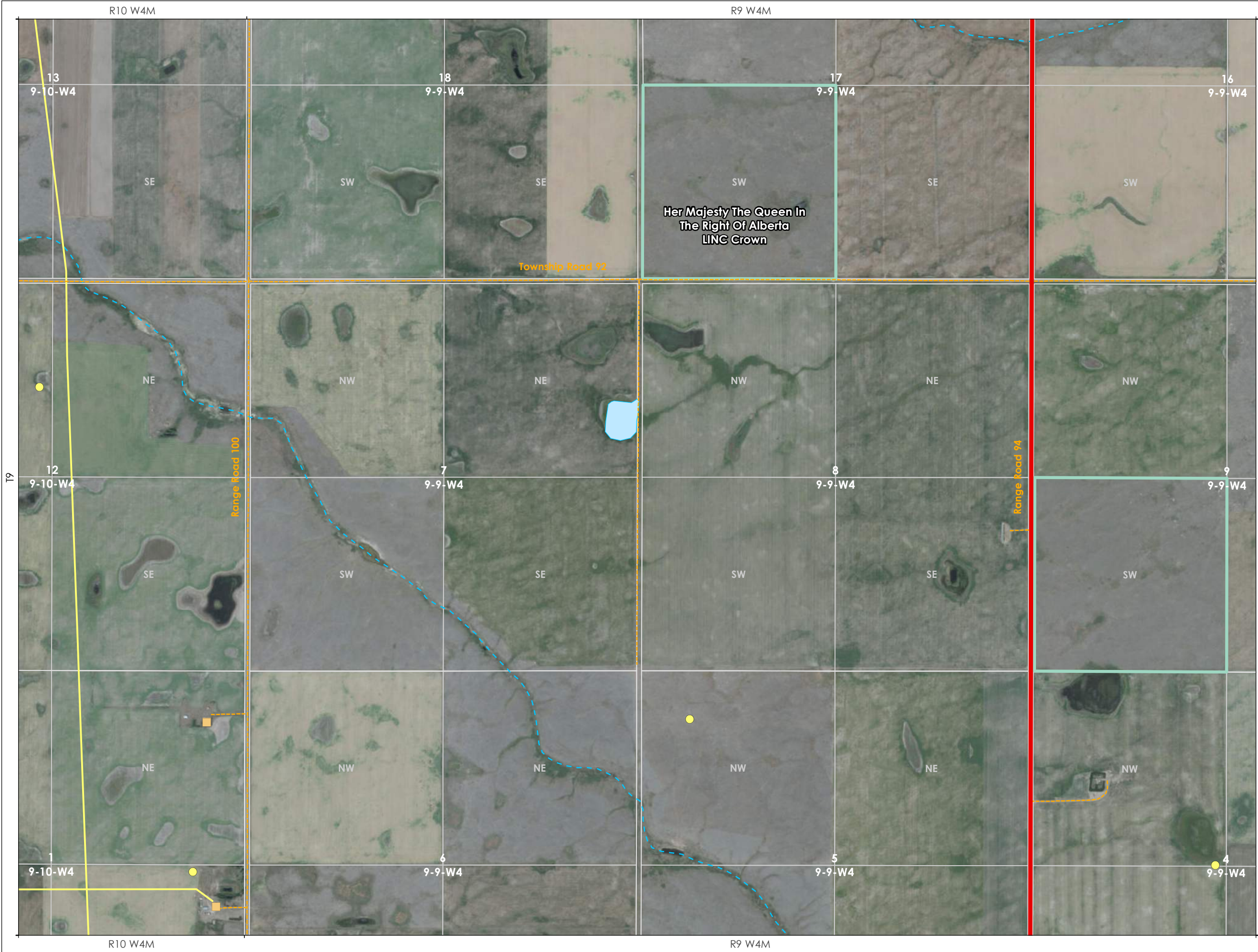
Meters

NAD 1983 UTM Zone 12N

| | | | |
|-------------------------|----------|----------|------------|
| CANADA WEST LAND | | | |
| Author | JP | Project | HRD-010281 |
| Map Date | 16/12/21 | Revision | 0 |
| Field Date | N/A | Page | 5 of 9 |

This product has been created with the highest degree of accuracy possible. However, information shown on this map is compiled from numerous sources and may not be complete or accurate. Cardon Group of Companies (CGC) on behalf of Canada West Land (CWL) cannot be held responsible for the misuse or misinterpretation of any information and offers no warranty, guarantees, or representations of any kind in connection to its accuracy or completeness. CGC on behalf of CWL accepts no liability for any loss, damage, or inconvenience caused by the use or reliance on any information or data related to this product.

Source: Esri, Maxar, GeoEye, Earthstar Geographics, CNES/Airbus DS, USDA, USGS, AeroGRID, IGN, and the GIS User Community.



Renewable Energy Systems
Canada Forty Mile Wind
Power Connection Project
Strip Mosaic
SM6

Electrical Grid

- Point Designation
- Proposed Transmission Line Routes
- Proposed Altalink Transmission Line
- Existing Transmission Line
- Approved Forty Mile 516S Substation
- Proposed Altalink Murray Lake 326S Switching Station

Transportation

- Highway - Primary
- Highway - Secondary
- Road - Local
- Road - Other

Oil and Gas

- Wellsite
- Pipelines

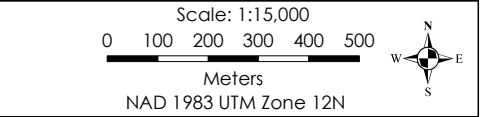
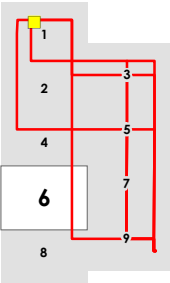
Hydrography

- Permanent
- Intermittent
- Waterbody

Land

- Residence
- Church and Cemetery
- Crown Land

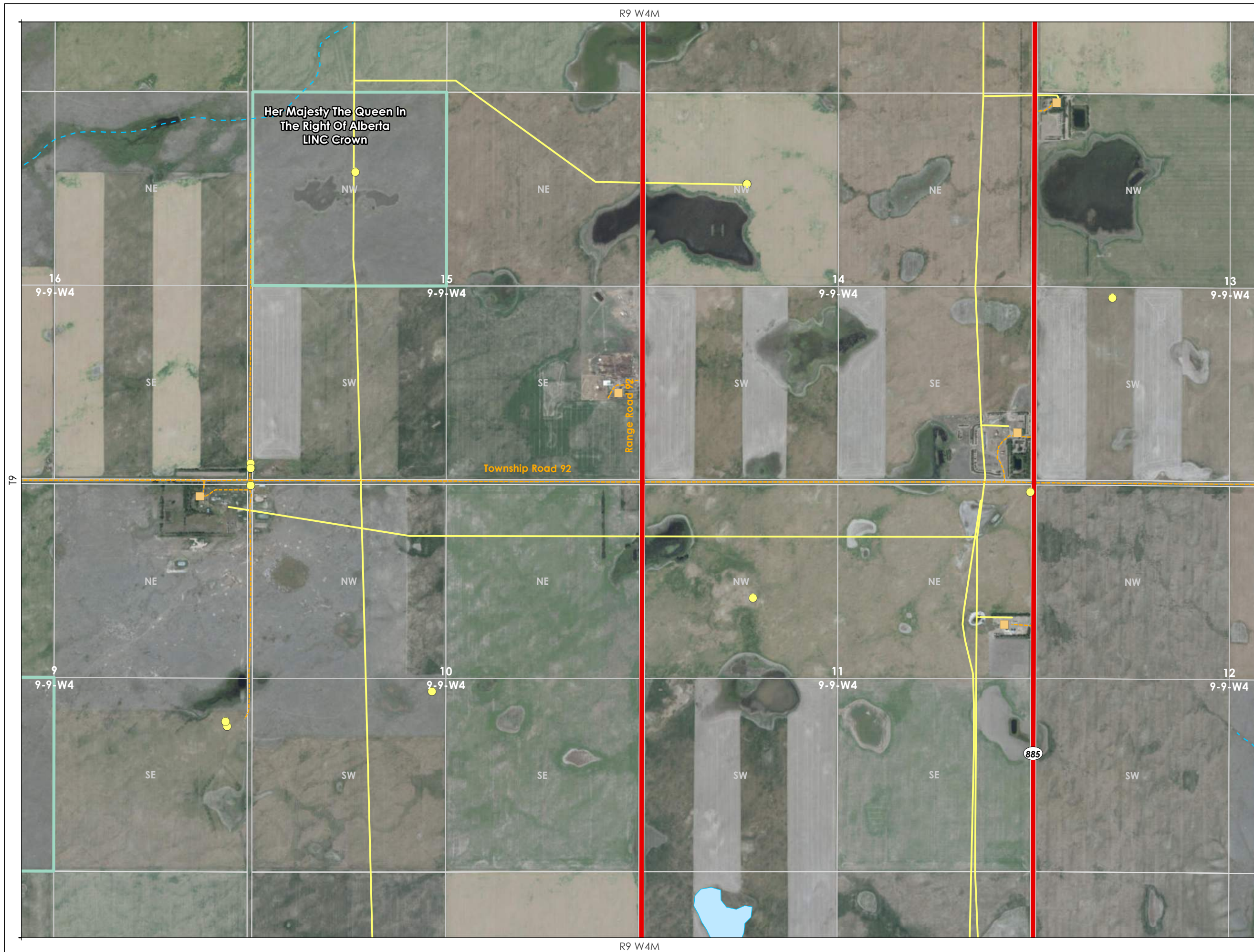
NOTES:
- Where the transmission line alignment appears to be on quarterline, the intent is to have the structure on quarterline. Where located on property, an approximate 25m right-of-way will be required, depending on the structure type used.
- Where the transmission line alignment appears to parallel road allowance or Highway, a structure could be located approximately 1m on road allowance or 1m on private property adjacent to the road allowance. Where located parallel to a road allowance, an approximate 12.5m right-of-way will be required on property, depending on the structure type used.
- All proposed transmission routes are shown as corridors, through consultation will determine which side of the road allowance the proposed route will be located. Many alignments are shown but only one route from the Approved Forty Mile Substation to AltaLink's Proposed Murray Lake Substation will be built.



| | | | |
|---------------------|----------|-------------------------|------------|
| CANADA WEST LAND | | Hardline Engineering | |
| Author | JP | Project | HRD-010281 |
| Map Date | 16/12/21 | Revision | 0 |
| Field Date | N/A | Page | 6 of 9 |

This product has been created with the highest degree of accuracy possible. However, information shown on this map is compiled from numerous sources and may not be complete or accurate. Cardon Group of Companies (CGC) on behalf of Canada West Land (CWL) cannot be held responsible for the misuse or misinterpretation of any information and offers no warranty, guarantees, or representations of any kind in connection to its accuracy or completeness. CGC on behalf of CWL accepts no liability for any loss, damage, or inconvenience caused by the use or reliance on any information or data related to this product.

Source: Esri, Maxar, GeoEye, Earthstar Geographics, CNES/Airbus DS, USDA, USGS, AeroGRID, IGN, and the GIS User Community.



**Renewable Energy Systems
Canada Forty Mile Wind
Power Connection Project
Strip Mosaic**
SM7

- Electrical Grid**

 - Point Designation
 - Proposed Transmission Line Routes
 - Proposed Altalink Transmission Line
 - Existing Transmission Line
 - Approved Forty Mile 51 6S Substation
 - Proposed Altalink Murray Lake 326S Switching Station

Transportation

 - Highway - Primary
 - Highway - Secondary
 - Road - Local
 - - - Road - Other

Oil and Gas

 - Wellsite
 - Pipelines

Hydrography

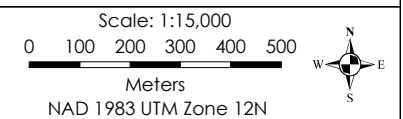
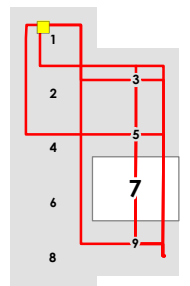
 - Permanent
 - · - · Intermittent
 - Waterbody

Land

 - Residence
 - Church and Cemetery
 - Crown Land

NOTES:

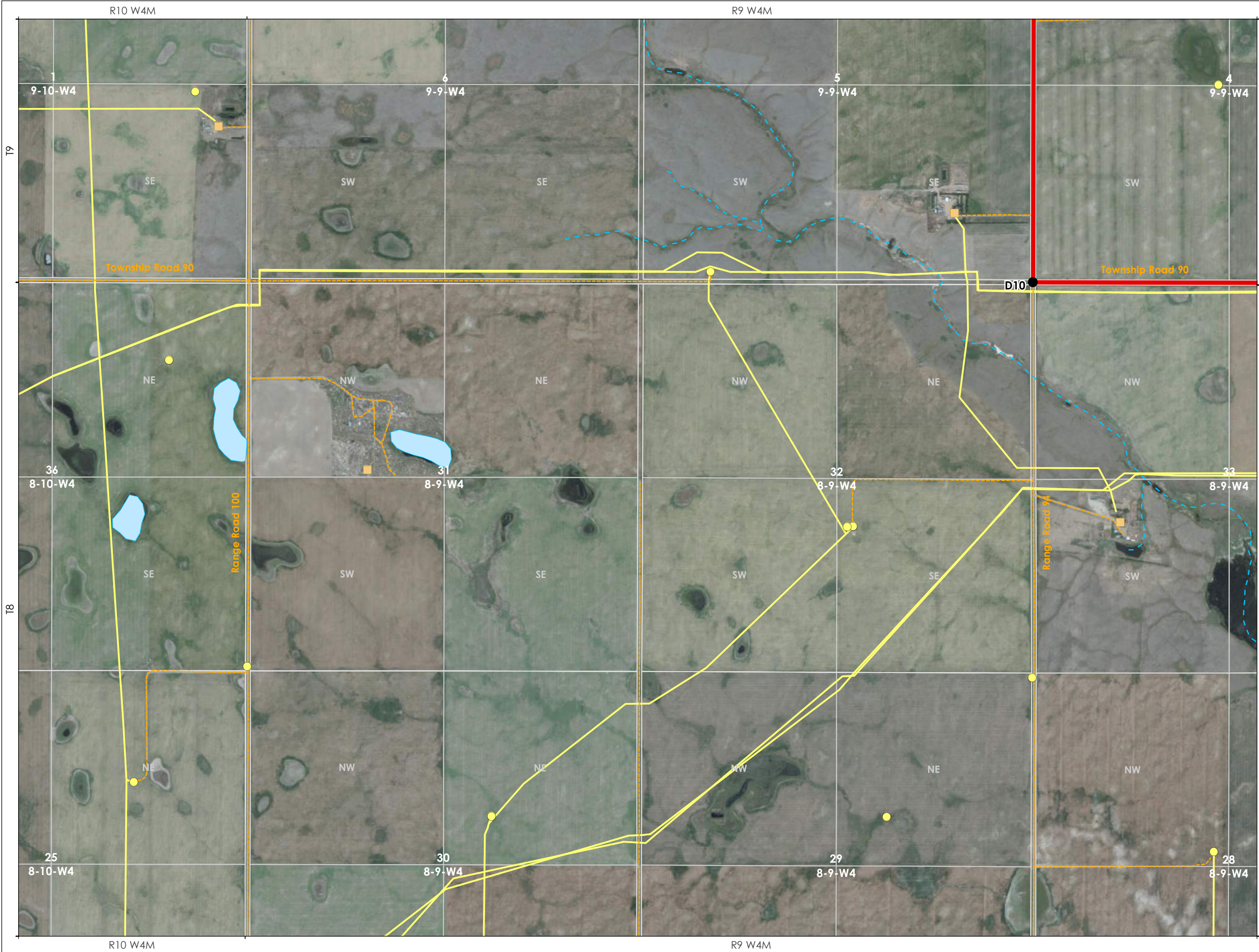
- Where the transmission line alignment appears to be on quarterline, the intent is to have the structure on quarterline. Where located on property, an approximate 25m right-of-way will be required, depending on the structure type used.
- Where the transmission line alignment appears to parallel road allowance or Highway, a structure could be located approximately 1m on road allowance or 1m on private property adjacent to the road allowance. Where located parallel to a road allowance, an approximate 12.5m right-of-way will be required on property, depending on the structure type used.
- All proposed transmission routes are shown as corridors, through consultation will determine which side of the road allowance the proposed route will be located. Many alignments are shown but only one route from the Approved Forty Mile Substation to AltaLink's Proposed Murray Lake Substation will be built.



| | | | |
|------------|----------|----------|------------|
| Author | JP | Project | HRD-010281 |
| Map Date | 16/12/21 | Revision | 0 |
| Field Date | N/A | Page | 7 of 9 |

This product has been created with the highest degree of accuracy possible. However, information shown on this map is compiled from numerous sources and may not be complete or accurate. Cardon Group of Companies (CGC) on behalf of Canada West Land (CWL) cannot be held responsible for the misuse or misinterpretation of any information and offers no warranty, guarantees, or representations of any kind in connection to its accuracy or completeness. CGC on behalf of CWL accepts no liability for any loss, damage, or inconvenience caused by the use or reliance on any information or data related to this product.

Source: Esri, Maxar, GeoEye, Earthstar Geographics, CNES/Airbus DS, USDA, USGS, AeroGRID, IGN, and the GIS User Community.



Renewable Energy Systems
Canada Forty Mile Wind
Power Connection Project
Strip Mosaic
SM8

Electrical Grid

- Point Designation
- Proposed Transmission Line Routes
- Proposed Altalink Transmission Line
- Existing Transmission Line
- Approved Forty Mile 516S Substation
- Proposed Altalink Murray Lake 326S Switching Station

Transportation

- Highway - Primary
- Highway - Secondary
- Road - Local
- Road - Other

Oil and Gas

- Wellsite
- Pipelines

Hydrography

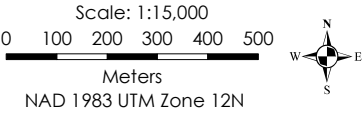
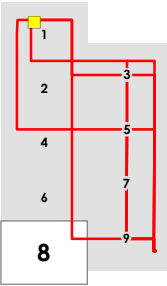
- Permanent
- Intermittent
- Waterbody

Land

- Residence
- Church and Cemetery
- Crown Land

NOTES:

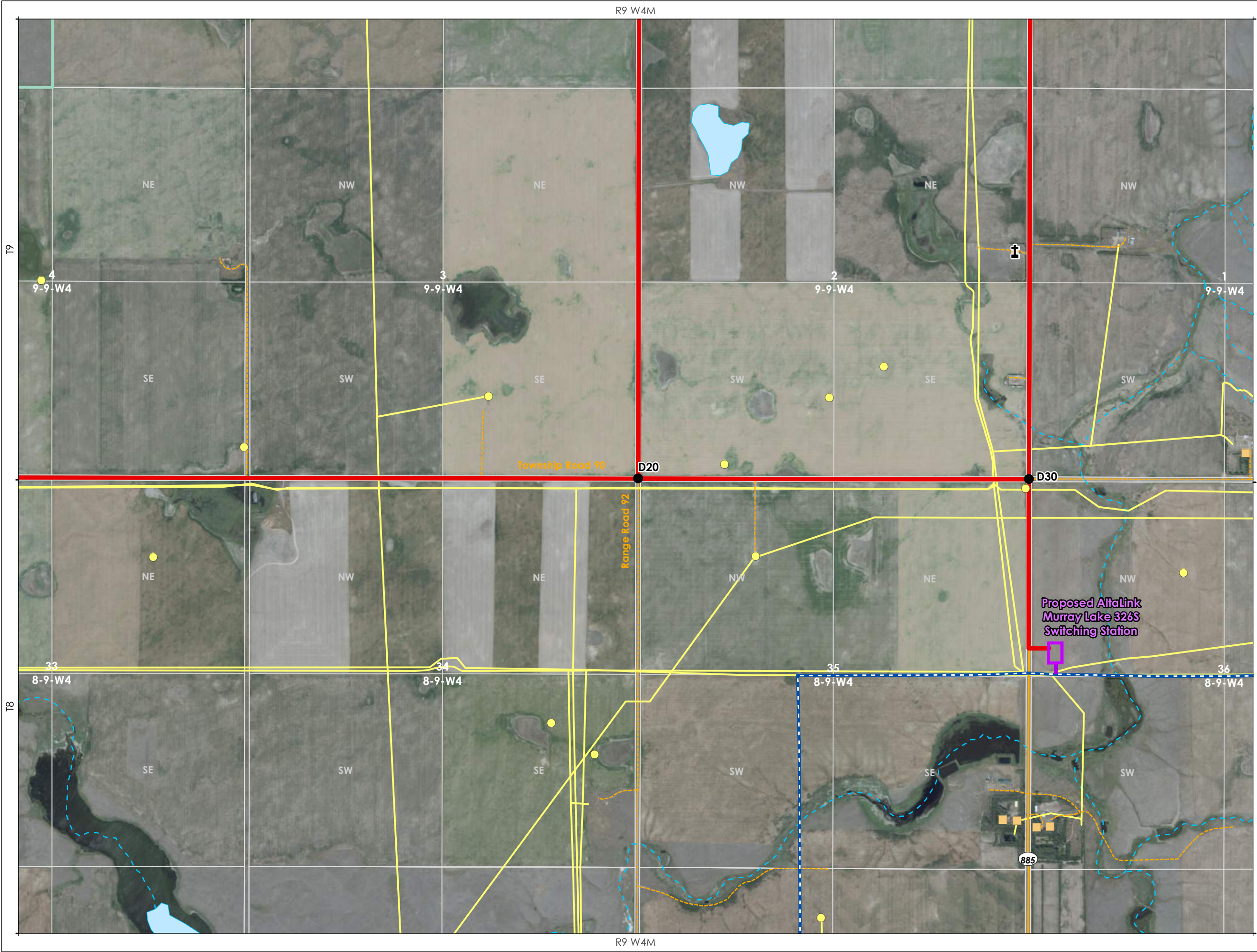
- Where the transmission line alignment appears to be on quarterline, the intent is to have the structure on quarterline. Where located on property, an approximate 25m right-of-way will be required, depending on the structure type used.
- Where the transmission line alignment appears to parallel road allowance or Highway, a structure could be located approximately 1m on road allowance or 1m on private property adjacent to the road allowance. Where located parallel to a road allowance, an approximate 12.5m right-of-way will be required on property, depending on the structure type used.
- All proposed transmission routes are shown as corridors, through consultation will determine which side of the road allowance the proposed route will be located. Many alignments are shown but only one route from the Approved Forty Mile Substation to AltaLink's Proposed Murray Lake Substation will be built.



| | | | |
|------------|----------|----------|------------|
| Author | JP | Project | HRD-010281 |
| Map Date | 16/12/21 | Revision | 0 |
| Field Date | N/A | Page | 8 of 9 |

This product has been created with the highest degree of accuracy possible. However, information shown on this map is compiled from numerous sources and may not be complete or accurate. Cardon Group of Companies (CGC) on behalf of Canada West Land (CWL) cannot be held responsible for the misuse or misinterpretation of any information and offers no warranty, guarantees, or representations of any kind in connection to its accuracy or completeness. CGC on behalf of CWL accepts no liability for any loss, damage, or inconvenience caused by the use or reliance on any information or data related to this product.

Source: Esri, Maxar, GeoEye, Earthstar Geographics, CNES/Airbus DS, USDA, USGS, AeroGRID, IGN, and the GIS User Community.



Renewable Energy Systems Canada Forty Mile Wind Power Connection Project Strip Mosaic SM9

Electrical Grid

- Point Designation
- Proposed Transmission Line Routes
- Proposed Altalink Transmission Line
- Existing Transmission Line
- Approved Forty Mile 516S Substation
- Proposed Altalink Murray Lake 326S Switching Station

Transportation

- Highway - Primary
- Highway - Secondary
- Road - Local
- Road - Other

Oil and Gas

- Wellsite
- Pipelines

Hydrography

- Permanent
- Intermittent
- Waterbody

Land

- Residence
- Church and Cemetery
- Crown Land

NOTES:

- Where the transmission line alignment appears to be on quarterline, the intent is to have the structure on quarterline. Where located on property, an approximate 25m right-of-way will be required, depending on the structure type used.
- Where the transmission line alignment appears to parallel road allowance or Highway, a structure could be located approximately 1m on road allowance or 1m on private property adjacent to the road allowance. Where located parallel to a road allowance, an approximate 12.5m right-of-way will be required on property, depending on the structure type used.
- All proposed transmission routes are shown as corridors, through consultation will determine which side of the road allowance the proposed route will be located. Many alignments are shown but only one route from the Approved Forty Mile Substation to AltaLink's Proposed Murray Lake Substation will be built.

Scale: 1:15,000

0 100 200 300 400 500 Meters

NAD 1983 UTM Zone 12N

| | |
|--------------------------|---------------------------|
| CANADA WEST LAND | |
| Author JP | Project HRD-010281 |
| Map Date 16/12/21 | Revision 0 |
| Field Date N/A | Page 9 of 9 |

This product has been created with the highest degree of accuracy possible. However, information shown on this map is compiled from numerous sources and may not be complete or accurate. Cardon Group of Companies (CGC) on behalf of Canada West Land (CWL) cannot be held responsible for the misuse or misinterpretation of any information and offers no warranty, guarantees, or representations of any kind in connection to its accuracy or completeness. CGC on behalf of CWL accepts no liability for any loss, damage, or inconvenience caused by the use or reliance on any information or data related to this product.

Source: Esri, Maxar, GeoEye, Earthstar Geographics, CNES/Airbus DS, USDA, USGS, AeroGRID, IGN, and the GIS User Community.