



Renewable Energy Systems Canada Forty Mile Wind Power Connection Project Strip Mosaic SM1

Electrical Grid

- Point Designation
- Transmission Line - Preferred Route
- Transmission Line - Alternate Route
- Proposed AltaLink Transmission Line
- Existing Transmission Line
- Approved Forty Mile 516S Substation
- Proposed AltaLink Murray Lake 326S Switching Station

Land

- Residence
- Church and Cemetery
- Crown Land

Transportation

- Highway - Primary
- Highway - Secondary
- Road - Local
- Road - Other

Hydrography

- Permanent
- Intermittent
- Waterbody

Oil and Gas

- Wellsite
- Pipelines

NOTES:

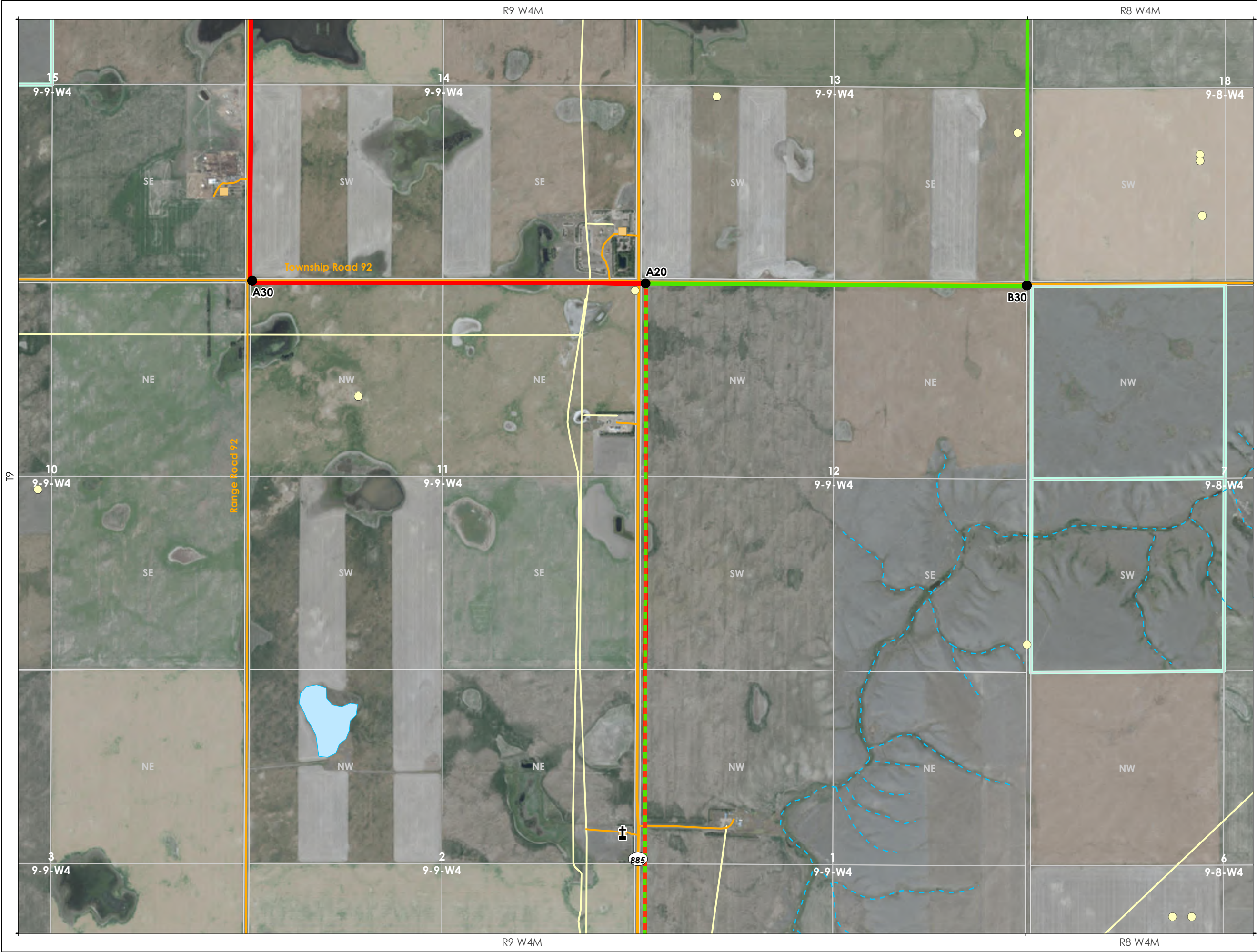
- Where the transmission line alignment appears to parallel Highway road allowance from A5 to A20 the intent is to have the structures be located 11m on property. Where located on property, an approximate 22m right-of-way will be required, depending on structure type used.
- Where the transmission line alignment appears to be on quarter line, the intent is to have the structures on quarter line. Where located on property, an approximate 22m right-of-way will be required, depending on structure type used.
- Where the transmission line alignment appears to parallel County road allowance or Highway road allowance (PD B45 to B50) a structure could be located approximately 1 m on road allowance or 1m on private property adjacent to the road allowance. Where located parallel to a road allowance, an approximate 11m right-of-way will be required on property, depending on the structure type used.
- A preferred and alternate route are shown but only one route from the Proposed Murray Lake Substation to the Approved Forty Mile Substation will be built.

Scale: 1:15,000
0 100 200 300 400 500
Meters
NAD 1983 UTM Zone 12N

CANADA WEST LAND	
Author JP	Project HRD-010281
Map Date 02/04/22	Revision 2
Field Date N/A	Page 1 of 6

This product has been created with the highest degree of accuracy possible. However, information shown on this map is compiled from numerous sources and may not be complete or accurate. Cardon Group of Companies (CGC) on behalf of Canada West Land (CWL) cannot be held responsible for the misuse or misinterpretation of any information and offers no warranty, guarantees, or representations of any kind in connection to its accuracy or completeness. CGC on behalf of CWL accepts no liability for any loss, damage, or inconvenience caused by the use or reliance on any information or data related to this product.

Source: Esri, Maxar, GeoEye, Earthstar Geographics, CNES/Airbus DS, USDA, USGS, AeroGRID, IGN, and the GIS User Community.



Renewable Energy Systems Canada Forty Mile Wind Power Connection Project Strip Mosaic SM2

Electrical Grid

- Point Designation
- Transmission Line - Preferred Route
- Transmission Line - Alternate Route
- Proposed Altalink Transmission Line
- Existing Transmission Line
- Approved Forty Mile 516S Substation
- Proposed Altalink Murray Lake 326S Switching Station
- Oil and Gas
 - Wellsite
 - Pipelines

Land

- Residence
- Church and Cemetery
- Crown Land

Transportation

- Highway - Primary
- Highway - Secondary
- Road - Local
- Road - Other

Hydrography

- Permanent
- Intermittent
- Waterbody

NOTES:

- Where the transmission line alignment appears to parallel Highway road allowance from A5 to A20 the intent is to have the structures be located 11m on property. Where located on property, an approximate 22m right-of-way will be required, depending on structure type used.
- Where the transmission line alignment appears to be on quarter line, the intent is to have the structures on quarter line. Where located on property, an approximate 22m right-of-way will be required, depending on structure type used.
- Where the transmission line alignment appears to parallel County road allowance or Highway road allowance (PD B45 to B50) a structure could be located approximately 1 m on road allowance or 1m on private property adjacent to the road allowance. Where located parallel to a road allowance, an approximate 11m right-of-way will be required on property, depending on the structure type used.
- A preferred and alternate route are shown but only one route from the Proposed Murray Lake Substation to the Approved Forty Mile Substation will be built.

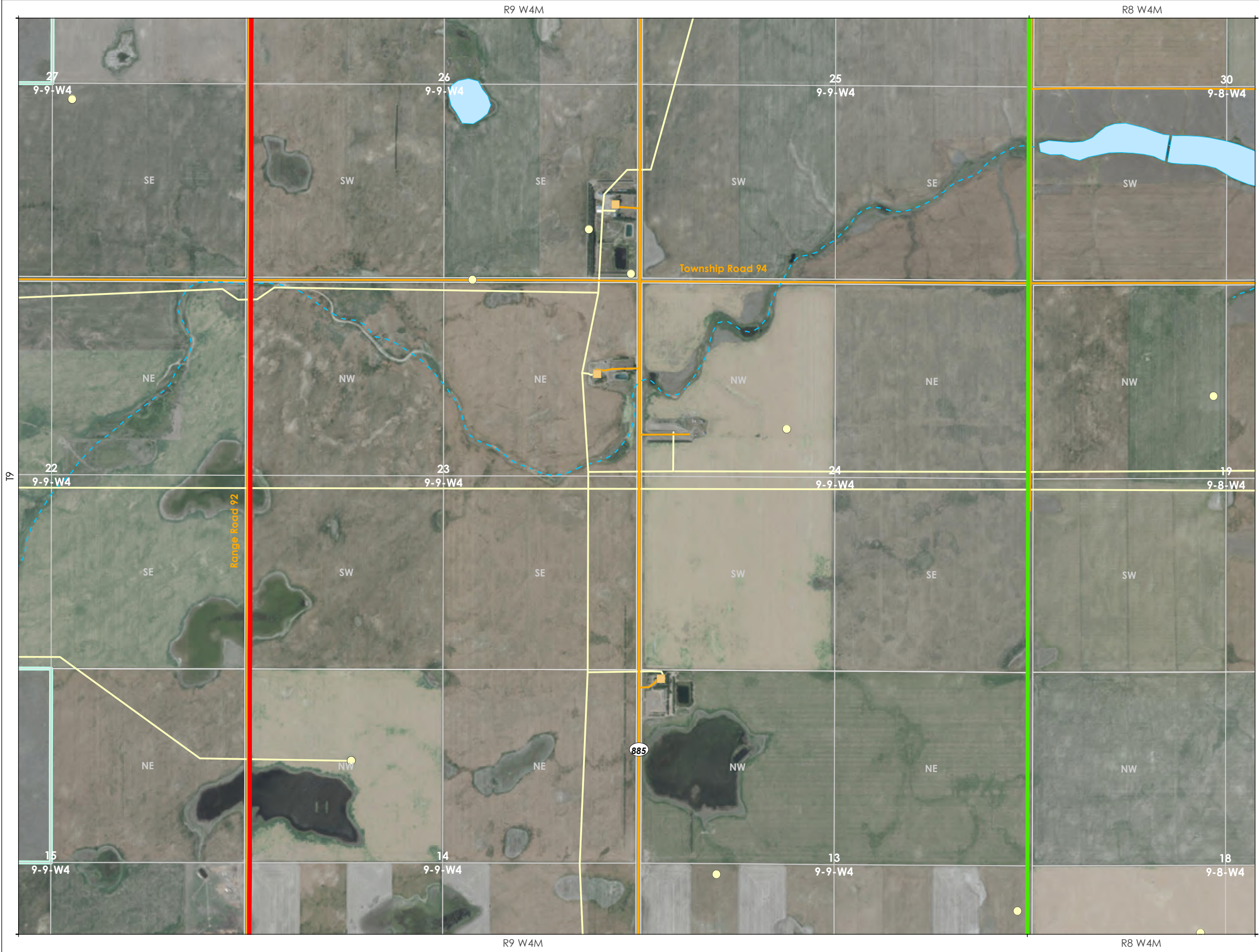
Scale: 1:15,000
0 100 200 300 400 500
Meters
NAD 1983 UTM Zone 12N

**CANADA
WEST LAND**

Author	JP	Project	HRD-010281
Map Date	02/04/22	Revision	2
Field Date	N/A	Page	2 of 6

This product has been created with the highest degree of accuracy possible. However, information shown on this map is compiled from numerous sources and may not be complete or accurate. Cardon Group of Companies (CGC) on behalf of Canada West Land (CWL) cannot be held responsible for the misuse or misinterpretation of any information and offers no warranty, guarantees, or representations of any kind in connection to its accuracy or completeness. CGC on behalf of CWL accepts no liability for any loss, damage, or inconvenience caused by the use or reliance on any information or data related to this product.

Source: Esri, Maxar, GeoEye, Earthstar Geographics, CNES/Airbus DS, USDA, USGS, AeroGRID, IGN, and the GIS User Community.



Renewable Energy Systems Canada Forty Mile Wind Power Connection Project Strip Mosaic SM3

Electrical Grid

- Point Designation
- Transmission Line - Preferred Route
- Transmission Line - Alternate Route
- Proposed Altalink Transmission Line
- Existing Transmission Line
- Approved Forty Mile 516S Substation
- Proposed Altalink Murray Lake 326S Switching Station
- Oil and Gas
 - Wellsite
 - Pipelines

Land

- Residence
- Church and Cemetery
- Crown Land

Transportation

- Highway - Primary
- Highway - Secondary
- Road - Local
- Road - Other

Hydrography

- Permanent
- Intermittent
- Waterbody

NOTES:

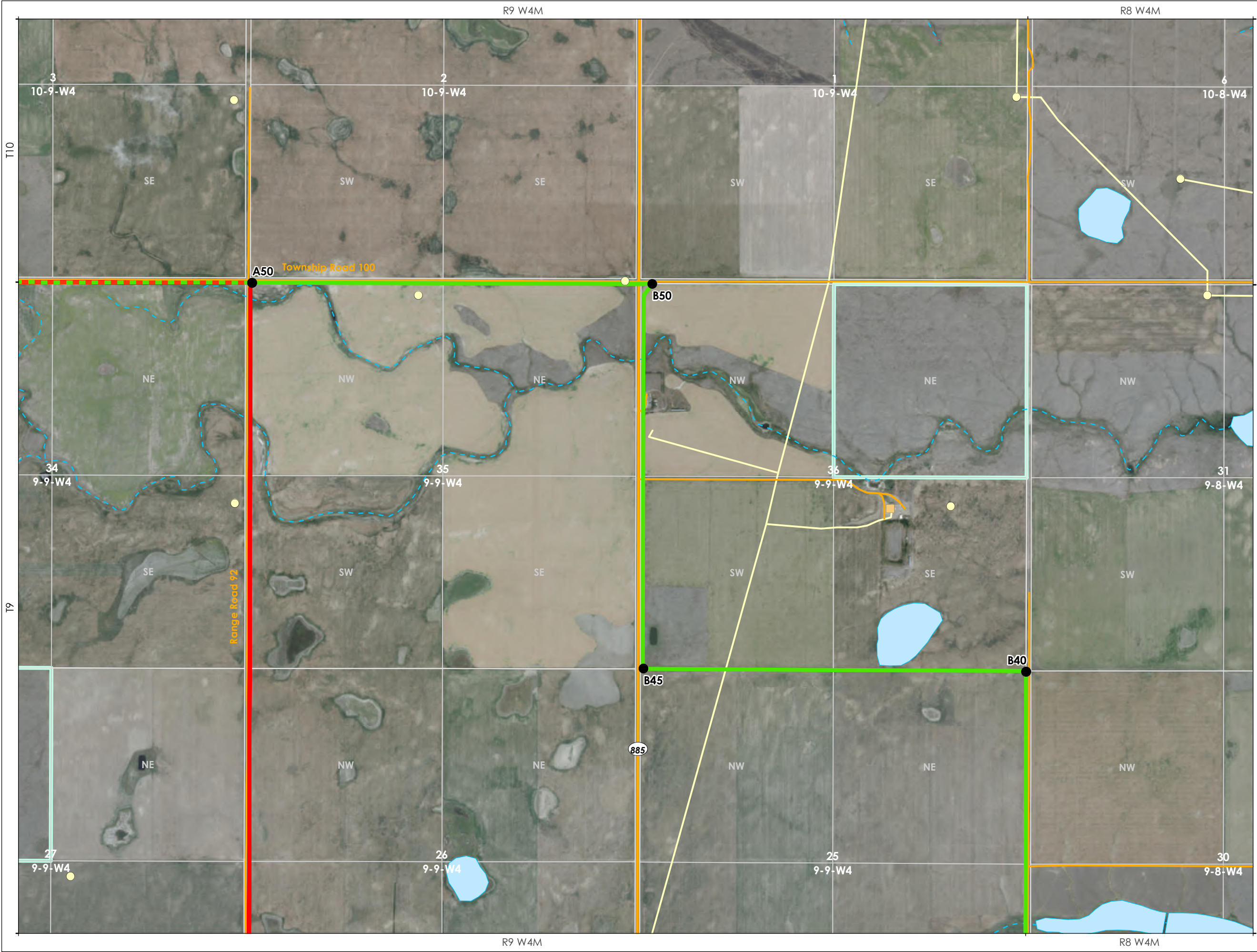
- Where the transmission line alignment appears to parallel Highway road allowance from A5 to A20 the intent is to have the structures be located 11m on property. Where located on property, an approximate 22m right-of-way will be required, depending on structure type used.
- Where the transmission line alignment appears to be on quarter line, the intent is to have the structures on quarter line. Where located on property, an approximate 22m right-of-way will be required, depending on structure type used.
- Where the transmission line alignment appears to parallel County road allowance or Highway road allowance (PD B45 to B50) a structure could be located approximately 1 m on road allowance, or 1m on private property adjacent to the road allowance. Where located parallel to a road allowance, an approximate 11m right-of-way will be required on property, depending on the structure type used.
- A preferred and alternate route are shown but only one route from the Proposed Murray Lake Substation to the Approved Forty Mile Substation will be built.

Scale: 1:15,000
0 100 200 300 400 500
Meters
NAD 1983 UTM Zone 12N

CANADA WEST LAND	
Author JP	Project HRD-010281
Map Date 02/04/22	Revision 2
Field Date N/A	Page 3 of 6

This product has been created with the highest degree of accuracy possible. However, information shown on this map is compiled from numerous sources and may not be complete or accurate. Cardon Group of Companies (CGC) on behalf of Canada West Land (CWL) cannot be held responsible for the misuse or misinterpretation of any information and offers no warranty, guarantees, or representations of any kind in connection to its accuracy or completeness. CGC on behalf of CWL accepts no liability for any loss, damage, or inconvenience caused by the use or reliance on any information or data related to this product.

Source: Esri, Maxar, GeoEye, Earthstar Geographics, CNES/Airbus DS, USDA, USGS, AeroGRID, IGN, and the GIS User Community.



Renewable Energy Systems Canada Forty Mile Wind Power Connection Project Strip Mosaic SM4

Electrical Grid

- Point Designation
- Transmission Line - Preferred Route
- Transmission Line - Alternate Route
- Proposed Altalink Transmission Line
- Existing Transmission Line
- Approved Forty Mile 516S Substation
- Proposed Altalink Murray Lake 326S Switching Station
- Oil and Gas
 - Wellsite
 - Pipelines

Land

- Residence
- Church and Cemetery
- Crown Land

Transportation

- Highway - Primary
- Highway - Secondary
- Road - Local
- Road - Other

Hydrography

- Permanent
- Intermittent
- Waterbody

NOTES:

- Where the transmission line alignment appears to parallel Highway road allowance from A5 to A20 the intent is to have the structures be located 11m on property. Where located on property, an approximate 22m right-of-way will be required, depending on structure type used.
- Where the transmission line alignment appears to be on quarter line, the intent is to have the structures on quarter line. Where located on property, an approximate 22m right-of-way will be required, depending on structure type used.
- Where the transmission line alignment appears to parallel County road allowance or Highway road allowance (PD B45 to B50) a structure could be located approximately 1 m on road allowance or 1m on private property adjacent to the road allowance. Where located parallel to a road allowance, an approximate 11m right-of-way will be required on property, depending on the structure type used.
- A preferred and alternate route are shown but only one route from the Proposed Murray Lake Substation to the Approved Forty Mile Substation will be built.

Scale: 1:15,000
0 100 200 300 400 500
Meters
NAD 1983 UTM Zone 12N

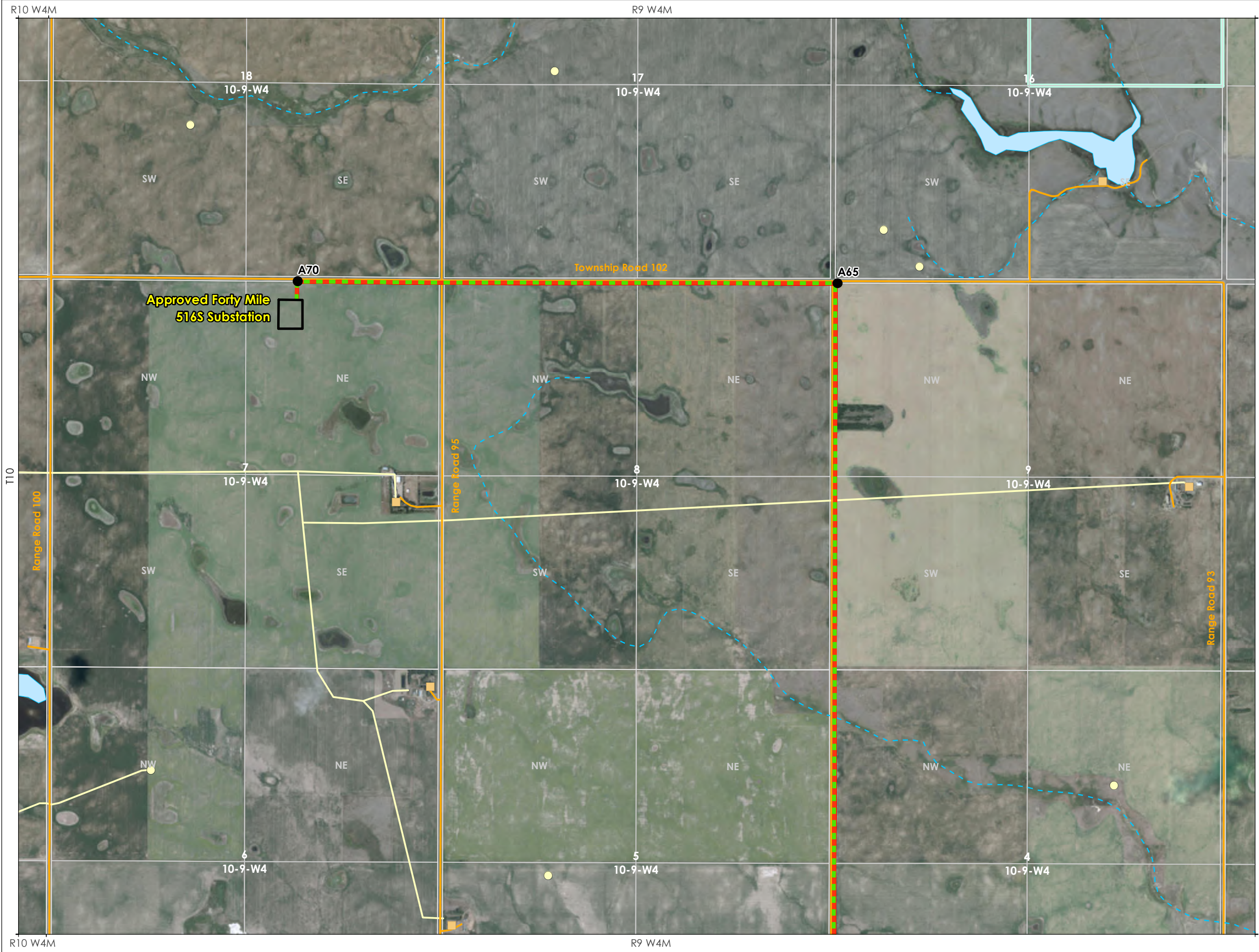
**CANADA
WEST LAND**

**Hardline
Engineering**

Author	JP	Project	HRD-010281
Map Date	02/04/22	Revision	2
Field Date	N/A	Page	4 of 6

This product has been created with the highest degree of accuracy possible. However, information shown on this map is compiled from numerous sources and may not be complete or accurate. Cardon Group of Companies (CGC) on behalf of Canada West Land (CWL) cannot be held responsible for the misuse or misinterpretation of any information and offers no warranty, guarantees, or representations of any kind in connection to its accuracy or completeness. CGC on behalf of CWL accepts no liability for any loss, damage, or inconvenience caused by the use or reliance on any information or data related to this product.

Source: Esri, Maxar, GeoEye, Earthstar Geographics, CNES/Airbus DS, USDA, USGS, AeroGRID, IGN, and the GIS User Community.



Renewable Energy Systems Canada Forty Mile Wind Power Connection Project Strip Mosaic SM6

Electrical Grid

- Point Designation
- Transmission Line - Preferred Route
- Transmission Line - Alternate Route
- Proposed Altalink Transmission Line
- Existing Transmission Line
- Approved Forty Mile 516S Substation
- Proposed Altalink Murray Lake 326S Switching Station

Land

- Residence
- Church and Cemetery
- Crown Land

Transportation

- Highway - Primary
- Highway - Secondary
- Road - Local
- Road - Other

Hydrography

- Permanent
- Intermittent
- Waterbody

Oil and Gas

- Wellsite
- Pipelines

NOTES:

- Where the transmission line alignment appears to parallel Highway road allowance from A5 to A20 the intent is to have the structures be located 11m on property. Where located on property, an approximate 22m right-of-way will be required, depending on structure type used.
- Where the transmission line alignment appears to be on quarter line, the intent is to have the structures on quarter line. Where located on property, an approximate 22m right-of-way will be required, depending on structure type used.
- Where the transmission line alignment appears to parallel County road allowance or Highway road allowance (PD B45 to B50) a structure could be located approximately 1 m on road allowance, or 1m on private property adjacent to the road allowance. Where located parallel to a road allowance, an approximate 11m right-of-way will be required on property, depending on the structure type used.
- A preferred and alternate route are shown but only one route from the Proposed Murray Lake Substation to the Approved Forty Mile Substation will be built.

Scale: 1:15,000

0 100 200 300 400 500 Meters

NAD 1983 UTM Zone 12N

Author	JP	Project	HRD-010281
Map Date	02/04/22	Revision	2
Field Date	N/A	Page	6 of 6

This product has been created with the highest degree of accuracy possible. However, information shown on this map is compiled from numerous sources and may not be complete or accurate. Cardon Group of Companies (CGC) on behalf of Canada West Land (CWL) cannot be held responsible for the misuse or misinterpretation of any information and offers no warranty, guarantees, or representations of any kind in connection to its accuracy or completeness. CGC on behalf of CWL accepts no liability for any loss, damage, or inconvenience caused by the use or reliance on any information or data related to this product.

Source: Esri, Maxar, GeoEye, Earthstar Geographics, CNES/Airbus DS, USDA, USGS, AeroGRID, IGN, and the GIS User Community.

Document Path: I:\Client Data\Hardline Engineering\HRD-010281\Products\Maps\HRD-010281_CWL_LND_MP_Strip_002.mxd